

Patent Number: 84545 (R.O.C.)

Patent Pending: 08/214, 079 (U.S.A.)

### Features

- Operating voltage: 1.2V~1.7V
- Low operating current: 3 $\mu$ A (typ.)
- Dialing number and conversation time display
- Conversation timer (59 mins and 59 secs max.)
- 8 or 10-digit LCD display driver; 3V, 1/2 bias, 1/3 duty (8-digit hand-held calculator LCD used for 8-digit applications)
- Real time clock with stopwatch
- Built-in dialer interface
- 12-hour or 24-hour format
- Two-button sequential operation for real time clock setting
- Uses 32768Hz crystal

### Applications

- Timers, clocks, watches
- LCD display drivers
- Telephone display interface
- Instrument display

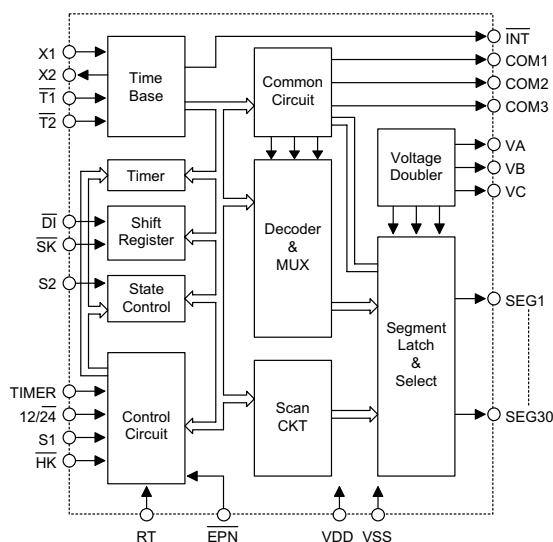
### General Description

The HT1611C is a CMOS chip designed for dialer interfaces driving 8 or 10-digit LCDs. Various functions, such as real time clock, dialing number and conversation time display are provided.

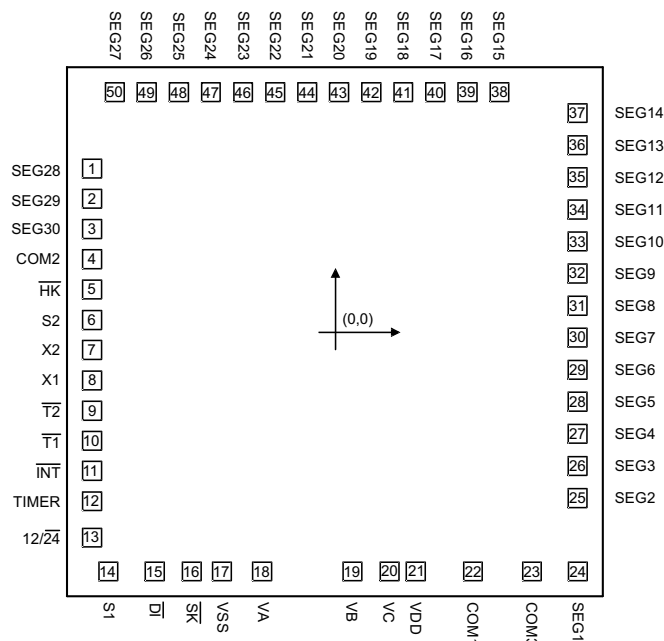
The real time is displayed by default. When answering a telephone call, the timer is activated to tell users how long the conversation has taken. After the telephone is hung up, the total conversation time is shown for about 5

seconds and then the real time is displayed again. When making a phone call, the HT1611C receives the dialing data from the dialer and displays the phone number from left to right on the LCD. However, if there is no dialing action within 10 seconds, it restarts the timer again. By adding a TIMER key, the HT1611C can provide a stopwatch function and timer reset/hold functions (for details, refer to the functional description).

### Block Diagram



## Pad Assignment



Chip size:  $122.5 \times 124.9 \text{ (mil)}^2$

\* The IC substrate should be connected to VDD in the PCB layout artwork.

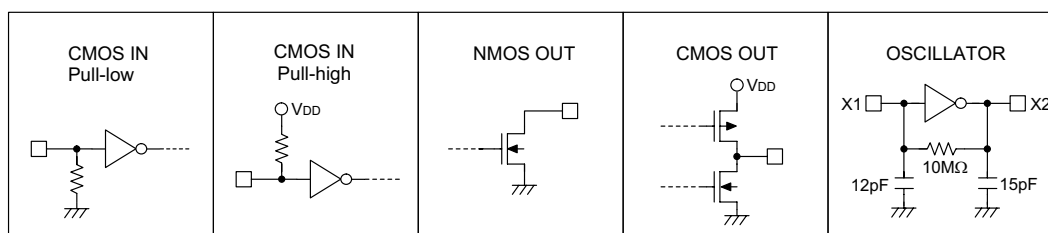
## Pad Coordinates

Unit: mil

| Pad No. | X      | Y      | Pad No. | X      | Y      | Pad No. | X      | Y     |
|---------|--------|--------|---------|--------|--------|---------|--------|-------|
| 1       | -55.73 | 37.50  | 18      | -16.79 | -54.72 | 35      | 55.46  | 35.51 |
| 2       | -55.73 | 30.58  | 19      | 3.90   | -54.72 | 36      | 55.46  | 42.86 |
| 3       | -55.73 | 23.66  | 20      | 12.43  | -54.72 | 37      | 55.46  | 50.20 |
| 4       | -55.73 | 16.77  | 21      | 18.40  | -54.72 | 38      | 37.60  | 55.02 |
| 5       | -55.73 | 9.85   | 22      | 31.48  | -54.72 | 39      | 30.26  | 55.02 |
| 6       | -55.73 | 2.85   | 23      | 45.02  | -54.72 | 40      | 22.91  | 55.02 |
| 7       | -55.73 | -4.07  | 24      | 55.50  | -54.72 | 41      | 15.57  | 55.02 |
| 8       | -55.73 | -11.00 | 25      | 55.46  | -37.96 | 42      | 8.22   | 55.02 |
| 9       | -55.73 | -17.96 | 26      | 55.46  | -30.58 | 43      | 0.88   | 55.02 |
| 10      | -55.73 | -24.84 | 27      | 55.46  | -23.24 | 44      | -6.46  | 55.02 |
| 11      | -55.73 | -31.73 | 28      | 55.46  | -15.89 | 45      | -13.81 | 55.02 |
| 12      | -55.73 | -38.65 | 29      | 55.46  | -8.55  | 46      | -21.15 | 55.02 |
| 13      | -55.73 | -47.03 | 30      | 55.46  | -1.21  | 47      | -28.50 | 55.02 |
| 14      | -52.02 | -54.72 | 31      | 55.46  | 6.14   | 48      | -35.84 | 55.02 |
| 15      | -41.35 | -54.72 | 32      | 55.46  | 13.48  | 49      | -43.18 | 55.02 |
| 16      | -32.86 | -54.72 | 33      | 55.46  | 20.83  | 50      | -50.53 | 55.02 |
| 17      | -25.97 | -54.72 | 34      | 55.46  | 28.17  |         |        |       |

**Pad Description**

| Pad Name                | I/O | Internal Connection  | Description   |
|-------------------------|-----|----------------------|---|
| SEG1~SEG30              | O   | CMOS OUT             | LCD segment signal output pads  |
| COM1~COM3               | O   | CMOS OUT             | LCD common signal output pads   |
| $\overline{\text{HK}}$  | I   | CMOS IN<br>Pull-high | Hook switch detector input<br>Active low  |
| S2                      | I   | CMOS IN<br>Pull-low  | Clock adjusting switch<br>Active high   |
| X2                      | O   | OSCILLATOR           | 32768Hz crystal oscillator output   |
| X1                      | I   | OSCILLATOR           | 32768Hz crystal oscillator input  |
| $\overline{\text{T2}}$  | I   | CMOS IN<br>Pull-high | Test pad (connected to VSS for production test)   |
| $\overline{\text{T1}}$  | I   | CMOS IN<br>Pull-high | Test pad (connected to VSS for production test)   |
| $\overline{\text{INT}}$ | O   | NMOS OUT             | Interrupt output, 2Hz (default) or 16Hz (by mask option)  |
| TIMER                   | I   | CMOS IN<br>Pull-low  | Timer reset and start/hold toggle control input pad   |
| 12/24                   | I   | CMOS IN<br>Pull-low  | 12-hour or 24-hour format option pad, connected to VDD for 12-hour format                         |
| S1                      | I   | CMOS IN<br>Pull-low  | Clock setting switch<br>Active high   |
| $\overline{\text{DI}}$  | I   | CMOS IN<br>Pull-high | Serial data input pad (connected to the dialer)<br>Data should be valid at the falling edge of SK |
| $\overline{\text{SK}}$  | I   | CMOS IN<br>Pull-high | Clock input pad (connected to the dialer)   |
| VA                      | O   | CMOS OUT             | Voltage doubler, connected to the external capacitor  |
| VB                      | O   | CMOS OUT             | Voltage doubler, connected to the external capacitor  |
| VC                      | O   | CMOS OUT             | Voltage doubler, connected to the external capacitor  |
| VDD                     | —   | —                    | Positive power supply   |
| VSS                     | —   | —                    | Negative power supply, ground   |

**Approximate internal connection circuit**


## Absolute Maximum Ratings

|                      |                              |                             |                |
|----------------------|------------------------------|-----------------------------|----------------|
| Supply Voltage ..... | -0.3V to 5V                  | Storage Temperature .....   | -50°C to 125°C |
| Input Voltage .....  | $V_{SS}-0.3$ to $V_{DD}+0.3$ | Operating Temperature ..... | -20°C to 75°C  |

Note: These are stress ratings only. Stresses exceeding the range specified under "Absolute Maximum Ratings" may cause substantial damage to the device. Functional operation of this device at other conditions beyond those listed in the specification is not implied and prolonged exposure to extreme conditions may affect device reliability.

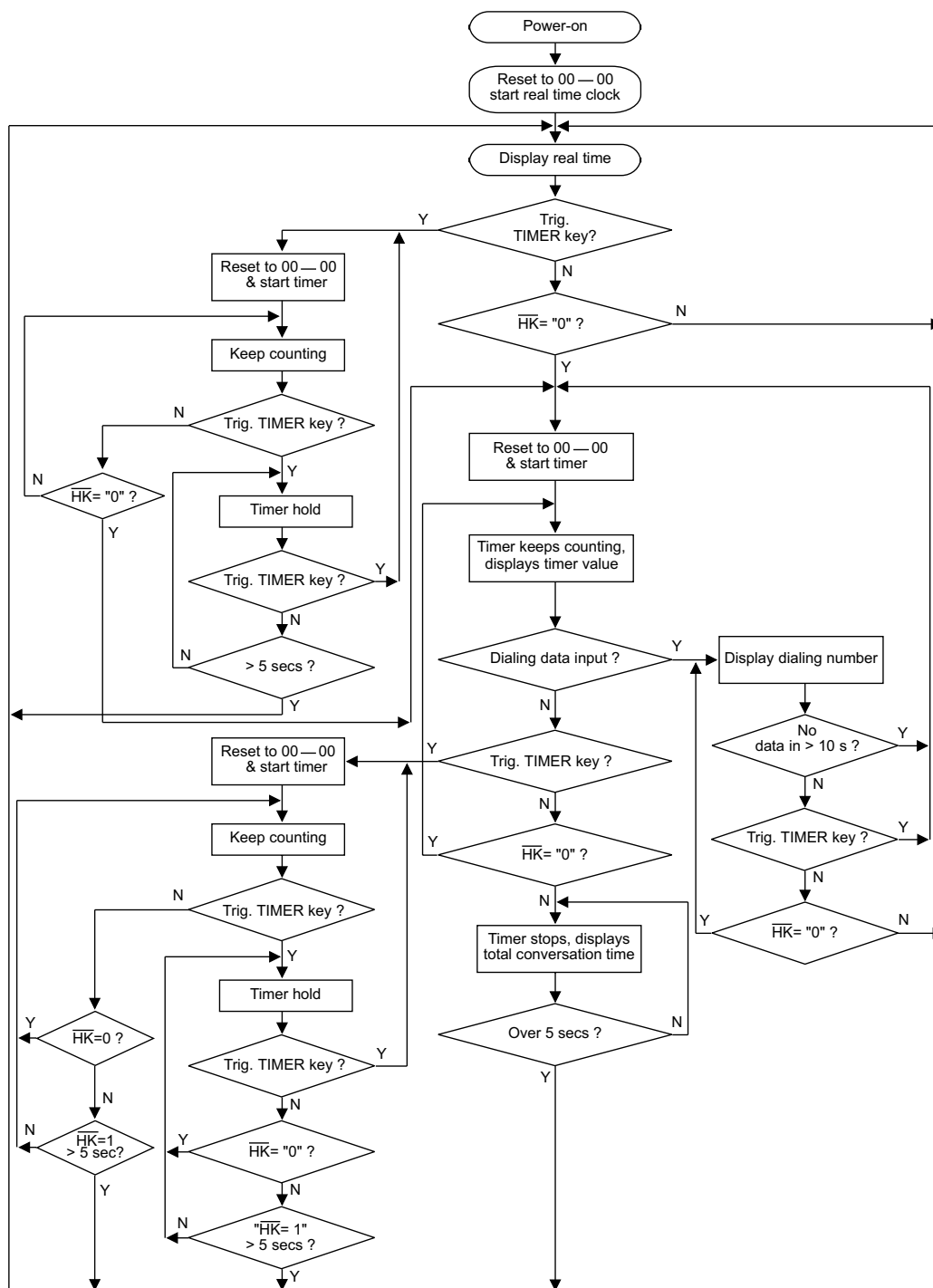
## Electrical Characteristics

 $f_{OSC}=32768\text{Hz}$ ,  $T_a=25^\circ\text{C}$ 

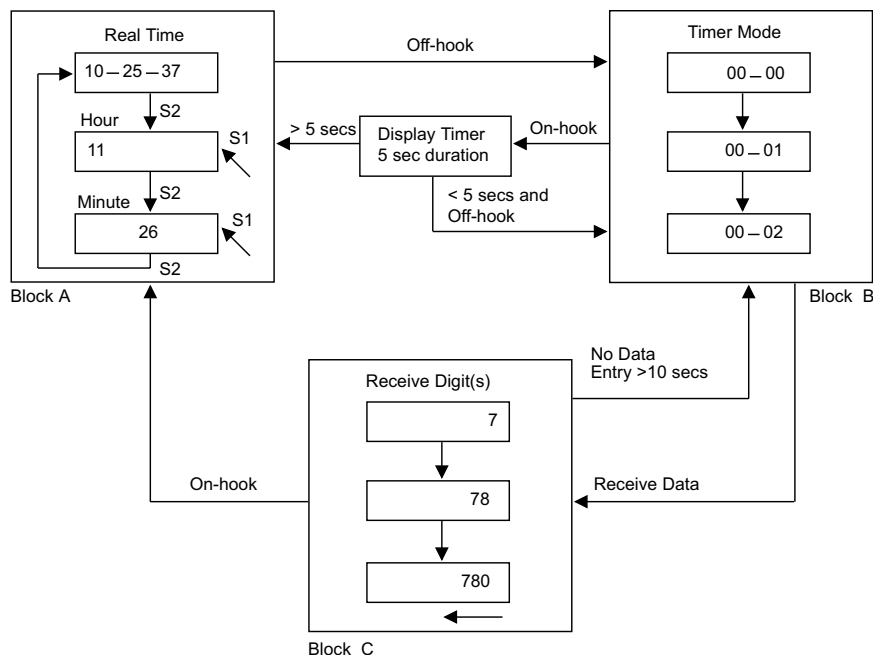
| Symbol    | Parameter                                      | Test Conditions |                                       | Min.        | Typ.  | Max.        | Unit             |
|-----------|--|-----------------|---------------------------------------|-------------|-------|-------------|------------------|
|           |  | $V_{DD}$        | Conditions                            |             |       |             |                  |
| $V_{DD}$  | Operating Voltage                              | —               | —                                     | 1.2         | 1.5   | 1.7         | V                |
| $V_{IL}$  | Input Low Voltage                              | 1.2V~1.7V       | —                                     | $V_{SS}$    | —     | $0.2V_{DD}$ | V                |
| $V_{IH}$  | Input High Voltage                             | 1.2V~1.7V       | —                                     | $0.8V_{DD}$ | —     | $V_{DD}$    | V                |
| $I_{STB}$ | Standby Current                                | 1.5V            | $V_{HK}=\text{Floating (or } V_{DD})$ | —           | 0.1   | 1           | $\mu\text{A}$    |
| $I_{DD}$  | Operating Current                              | 1.5V            | No load                               | —           | 3     | 10          | $\mu\text{A}$    |
| $I_{OL}$  | Output Sink Current of $\overline{\text{INT}}$ | 1.5V            | $V_O=0.3\text{V}$                     | 500         | 1000  | —           | $\mu\text{A}$    |
| $t_A$     | Data Setup Time                                | 1.5V            | —                                     | 1           | —     | —           | $\mu\text{s}$    |
| $t_B$     | Data Hold On Time                              | 1.5V            | —                                     | 2           | —     | —           | $\mu\text{s}$    |
| $t_C$     | Inter Digit Time                               | 1.5V            | —                                     | 5           | —     | —           | $\mu\text{s}$    |
| $t_{DB}$  | Debounce Time (HK, S1, S2, TIMER)              | 1.5V            | —                                     | —           | 31.25 | —           | ms               |
| $R_{HI}$  | Pull-high Resistance (HK, DI, SK)              | 1.5V            | $V_{IN}=0\text{V}$                    | —           | 1     | —           | $\text{M}\Omega$ |
| $R_{LO}$  | Pull-low Resistance (TIMER, S1, S2, 12/24)     | 1.5V            | $V_{TIMER}=1.5\text{V}$               | —           | 5     | —           | $\text{M}\Omega$ |
| $f_{OSC}$ | System Frequency                               | 1.5V            | Crystal=32768Hz                       | —           | 32768 | —           | Hz               |

## Functional Description

### Operational flow chart



# On-hook & off-hook



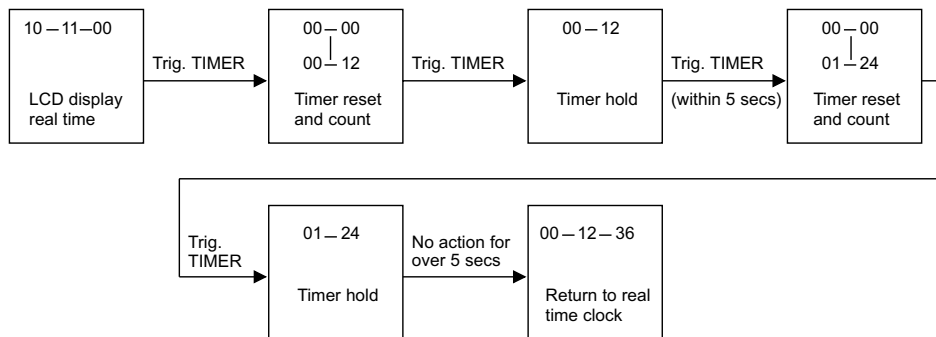
Note: Block A shows the switches S1 and S2 that are used for setting and selecting.

Block B illustrates a timer mode when Off-hook; timer resets and starts to count the conversation time.

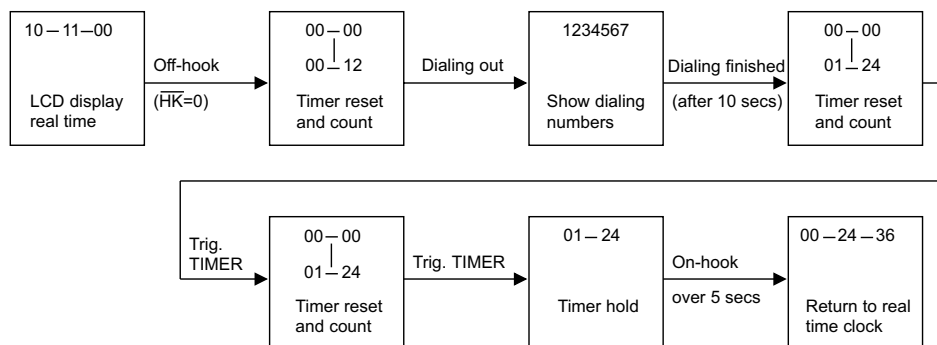
In Block C, the dialing data is received and displayed on the LCD from left to right after Off-hook. When the entry interval is over 10 seconds, it resets the timer and starts to count.

## TIMER key function

The TIMER key is used to start/stop the timer (toggle). In real time mode, it can perform a stopwatch function.



In the conversation timer mode, it can reset or hold the timer.



### Data & Timing

- For telephone application

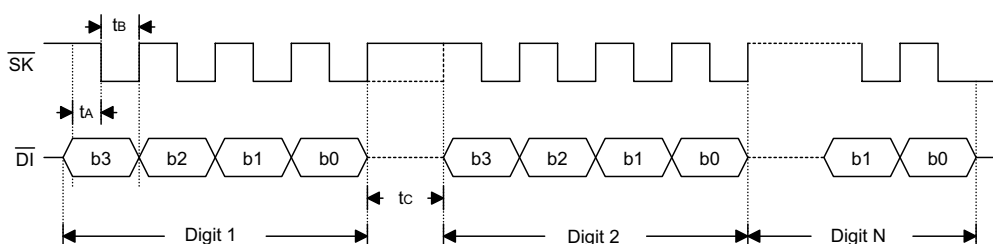
The HT1611C is designed to display telephone numbers derived from the HT93XXX series telephone dialers. The corresponding data is illustrated in the following table.

| Key-In | Data Code |    |    |    | Display |
|--------|-----------|----|----|----|---------|
|        | b3        | b2 | b1 | b0 |         |
| Blank  | 0         | 0  | 0  | 0  | Blank   |
| 1      | 0         | 0  | 0  | 1  | 1       |
| 2      | 0         | 0  | 1  | 0  | 2       |
| 3      | 0         | 0  | 1  | 1  | 3       |
| 4      | 0         | 1  | 0  | 0  | 4       |
| 5      | 0         | 1  | 0  | 1  | 5       |
| 6      | 0         | 1  | 1  | 0  | 6       |
| 7      | 0         | 1  | 1  | 1  | 7       |
| 8      | 1         | 0  | 0  | 0  | 8       |
| 9      | 1         | 0  | 0  | 1  | 9       |
| 0      | 1         | 0  | 1  | 0  | 0       |
| *      | 1         | 1  | 0  | 1  | *       |
| #      | 1         | 1  | 0  | 0  | #       |
| F      | 1         | 0  | 1  | 1  | F       |
| P      | 1         | 1  | 1  | 0  | P       |
|        | 1         | 1  | 1  | 1  | -       |

- For instrument or  $\mu$ C application

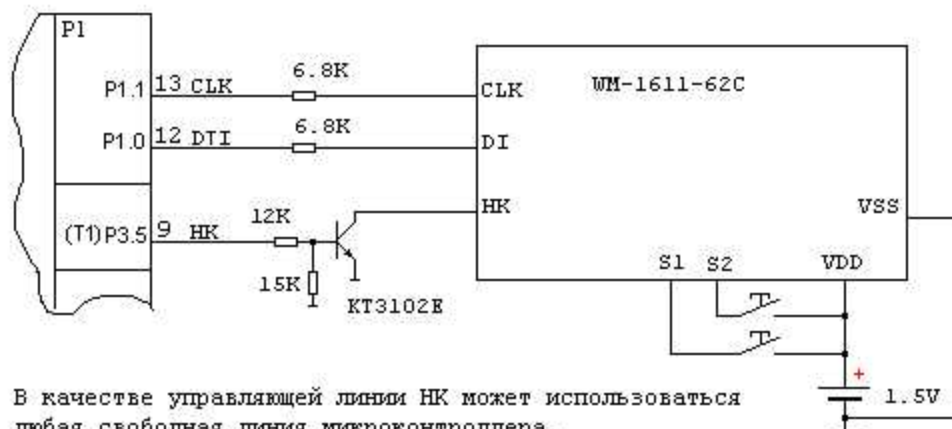
The HT1611C is also capable of displaying BCD data generated from instrument or a  $\mu$ C system. The corresponding data and timing is shown in the Data latch timing. Before the data is transmitted to the HT1611C, the  $\overline{HK}$  pin should be pulled-low or continuously kept low. The HT1611C is then ready to receive the data. At the falling edge of the clock the data is shifted in to the IC. After all the data is sent to the HT1611C, the  $\overline{SK}$  pin is set low to avoid switching to the timer mode.

- Data latch timing



Дополнительный материал по режимам обмена с индикатором  
типа WM-1611-62C.

Схема подключения к AT89C2051:

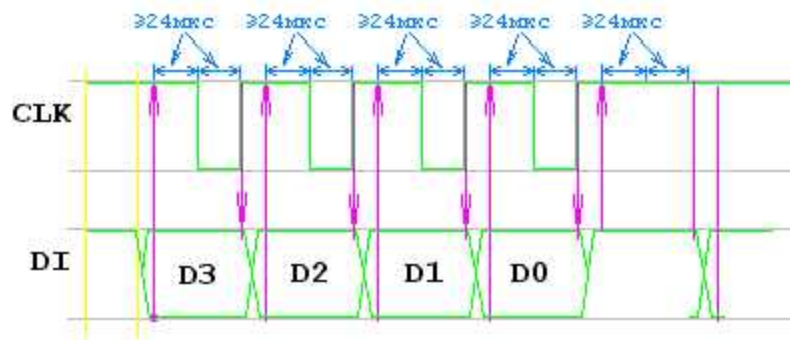


В качестве управляющей линии HK может использоваться  
любая свободная линия микроконтроллера.

В качестве линий CLK и DI предпочтительно  
использование линий P1.0 и P1.1.

Диаграмма сигналов соответствует документации ИС  
HT1611, за исключением интервалов времени.

Рекомендуемые интервалы указаны ниже:

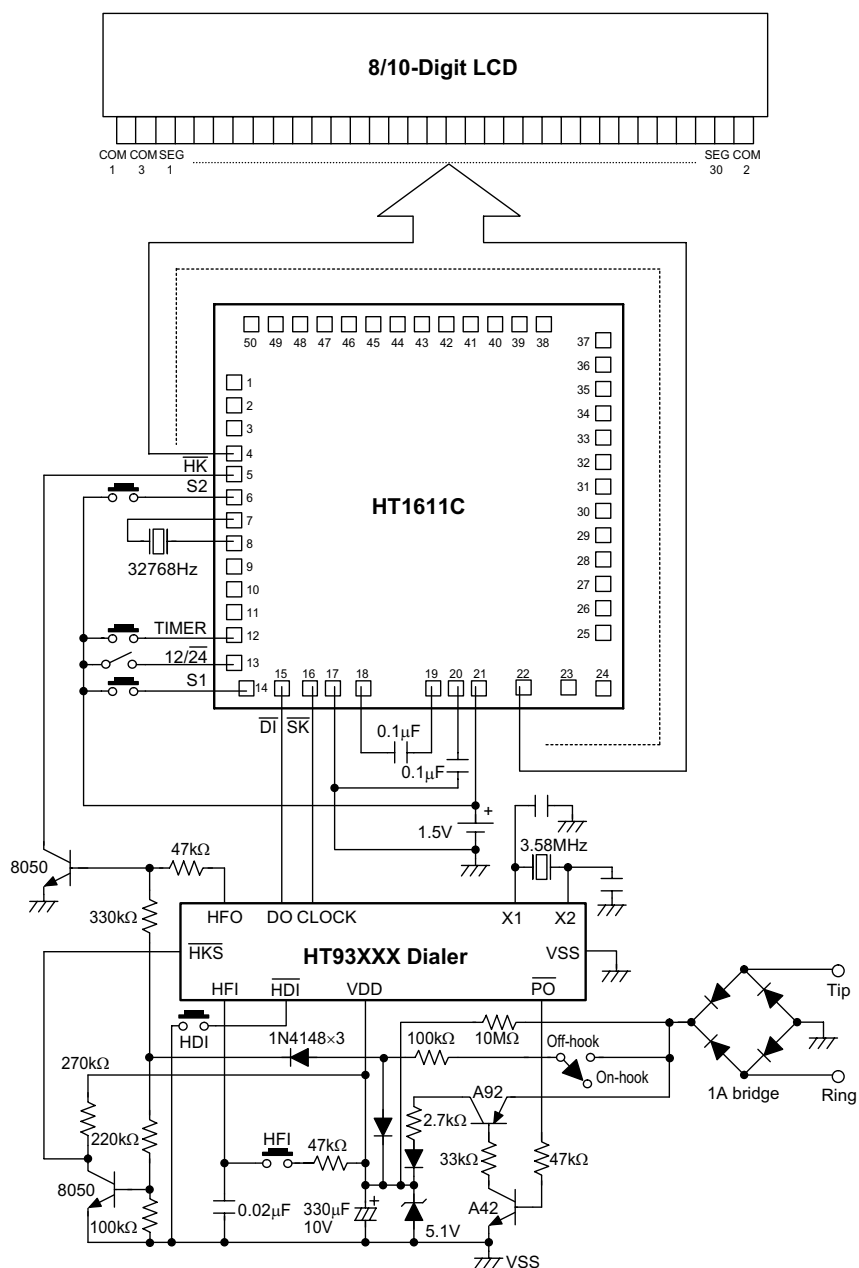


По данным макетного испытания  
10-14 июня 2005г.  
Б.А. Крутицкий.  
e-mail: bak-emt@yandex.ru



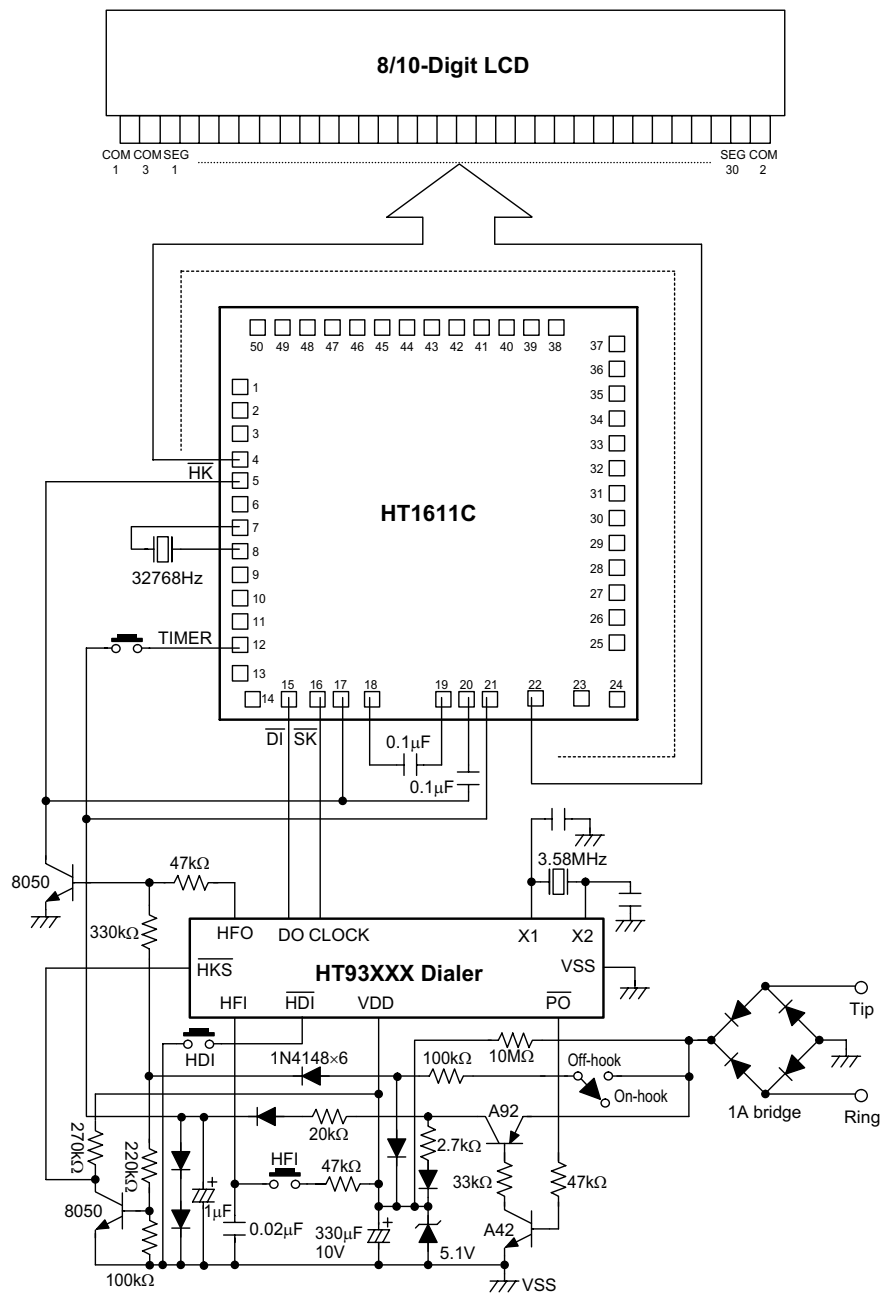
## Application Circuits

For telephone interfacing (with batteries)



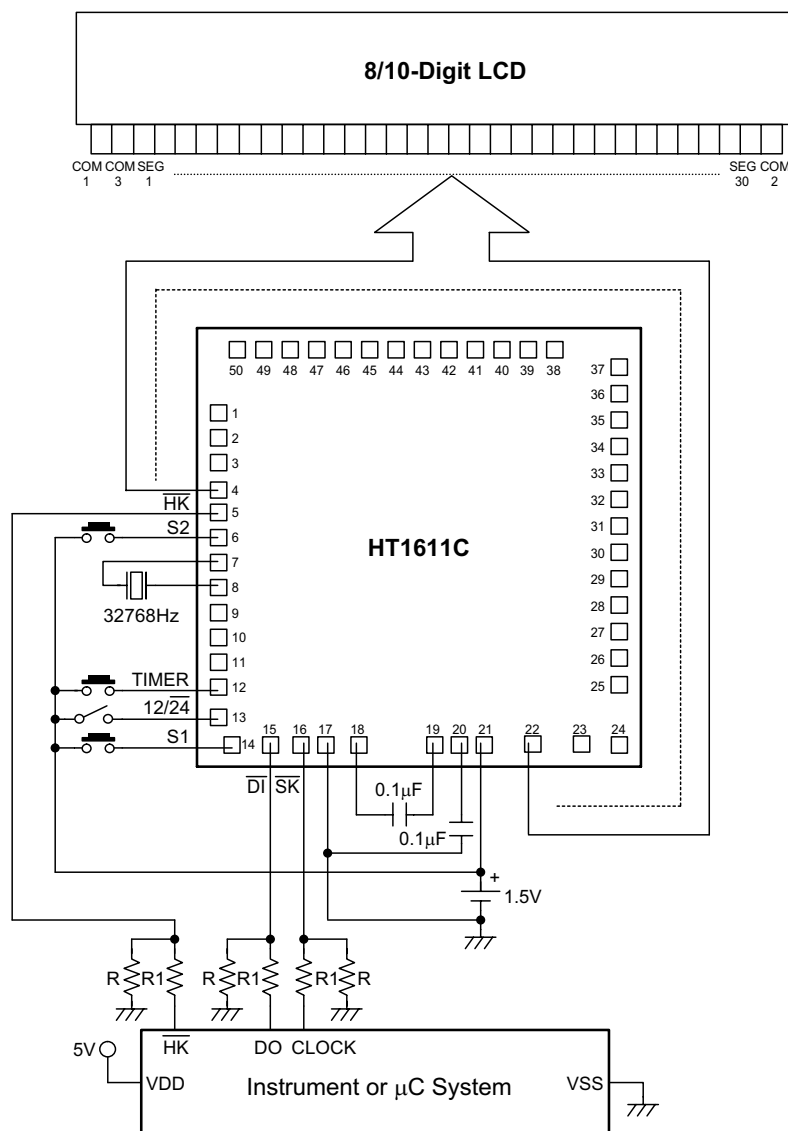
\* The IC substrate should be connected to VDD in the PCB layout artwork.

For telephone interfacing (without batteries)



\* The IC substrate should be connected to VDD in the PCB layout artwork.

For instrument or  $\mu$ C use



\* The IC substrate should be connected to VDD in the PCB layout artwork.

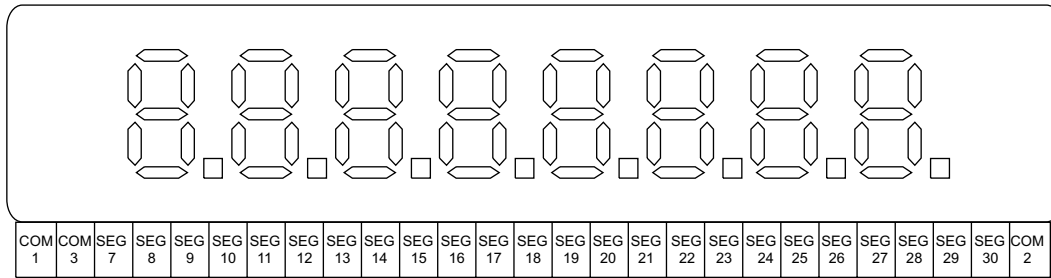
Note: To drive  $\overline{SK}$ ,  $\overline{DI}$ ,  $\overline{HK}$ , an open drain NMOS output structure is recommended.

To drive  $\overline{SK}$ ,  $\overline{DI}$  and  $\overline{HK}$  with a CMOS output structure, a voltage divider is needed ( $R=4.3k\Omega$ ,  $R1=10k\Omega$ ).

## LCD Configuration

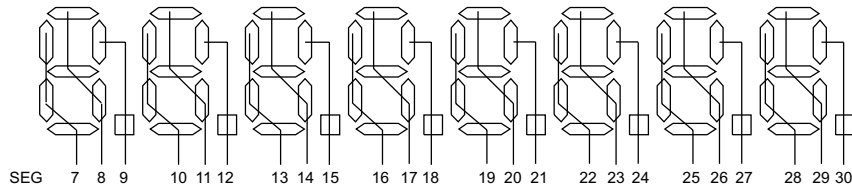
For 8-digit application

- Segment electrode side

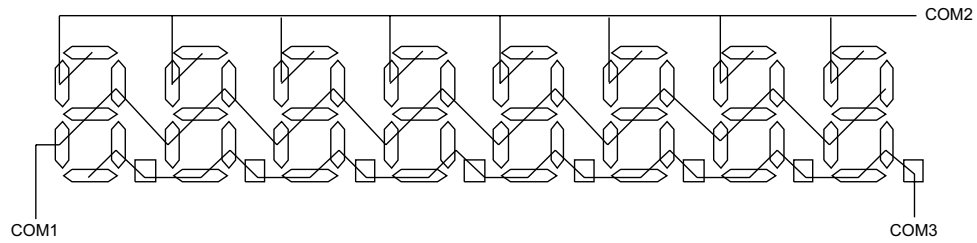


LCD driving system 1/2 bias, 1/3 duty, 3V

- Common electrode side

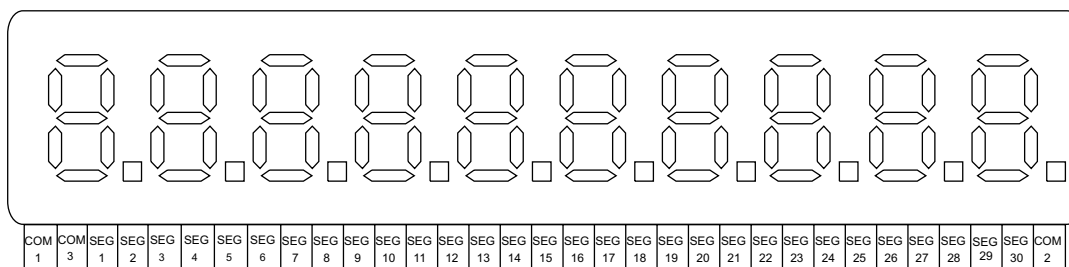


- LCD connection



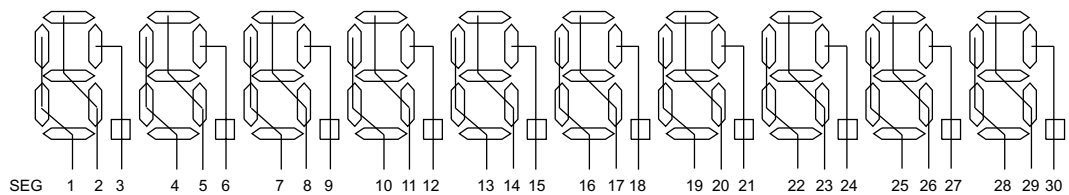
**For 10-digit application**

- Segment electrode side

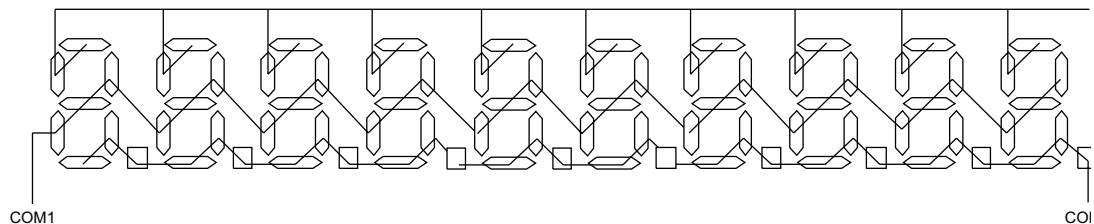


LCD driving system 1/2 bias, 1/3 duty, 3V

- Common electrode side



- LCD connection



**Holtek Semiconductor Inc. (Headquarters)**

No.3, Creation Rd. II, Science-based Industrial Park, Hsinchu, Taiwan  
Tel: 886-3-563-1999  
Fax: 886-3-563-1189  
<http://www.holtek.com.tw>

**Holtek Semiconductor Inc. (Sales Office)**

11F, No.576, Sec.7 Chung Hsiao E. Rd., Taipei, Taiwan  
Tel: 886-2-2782-9635  
Fax: 886-2-2782-9636  
Fax: 886-2-2782-7128 (International sales hotline)

**Holtek Semiconductor (Shanghai) Inc.**

7th Floor, Building 2, No.889, Yi Shan Rd., Shanghai, China  
Tel: 021-6485-5560  
Fax: 021-6485-0313  
<http://www.holtek.com.cn>

**Holtek Semiconductor (Hong Kong) Ltd.**

RM.711, Tower 2, Cheung Sha Wan Plaza, 833 Cheung Sha Wan Rd., Kowloon, Hong Kong  
Tel: 852-2-745-8288  
Fax: 852-2-742-8657

**Holmate Semiconductor, Inc.**

48531 Warm Springs Boulevard, Suite 413, Fremont, CA 94539  
Tel: 510-252-9880  
Fax: 510-252-9885  
<http://www.holmate.com>

Copyright © 2001 by HOLTEK SEMICONDUCTOR INC.

The information appearing in this Data Sheet is believed to be accurate at the time of publication. However, Holtek assumes no responsibility arising from the use of the specifications described. The applications mentioned herein are used solely for the purpose of illustration and Holtek makes no warranty or representation that such applications will be suitable without further modification, nor recommends the use of its products for application that may present a risk to human life due to malfunction or otherwise. Holtek reserves the right to alter its products without prior notification. For the most up-to-date information, please visit our web site at <http://www.holtek.com.tw>.