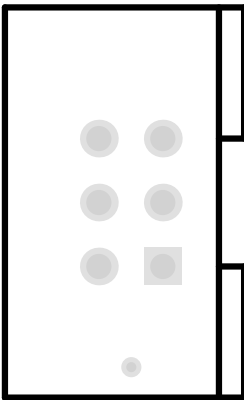


Designator	Value	Comment	Footprint	LibRef	Quantity
C1, C4, C6, C10, C15, C17, C19, C21	10uF	10uF6.3V	CHIPA	T491A106K006AT	8
C2, C3, C5, C7, C8, C11, C14, C16, C18, C20, C34, C47, C48, C50, C55, C56, C59, C61	0.1uF	0.1uF	C0805	GRM21BR71H104K	18
C9, C12	20pF	20pF	C0805	GRM2165C1H200J**	2
C13, C29, C38, C40, C49, C54, C57, C58, C60, C62, C63	4.7uF	4.7uF	C0805	GRM21BR61E475KA12L	11
C22, C23, C24, C25, C26, C27, C28, C30, C31, C35, C36, C37, C39, C41, C42, C43, C44, C45, C46	0.1uF	0.1uF	C0603	CC0603KRX7R9BB104	19
C32, C64	10nF	10nF	C0805	CC0402JRX7R9BB103	2
C33	10uF	10uF25V	CHIPB	293D106X9025B2TE3	1
C51	NA	NA	C0805	NA	1
C52	20uF	20uF16V	CHIPB	TECAP22/16VB20	1
C53	3.9nF	3.9nF	C0805	GRM2165C1H392JA01D	1
DA1	AD7997	AD7997	TSSOP-20	AD7997BRU2-0	1
DA2	MCP9700	MCP9700	SOT-23-3	MCP9700AT-E/TT	1
DA3	REF3030		SOT-23-3	REF3030AIDBZR	1
DA4, DA6	LD1117-1.2, LM1117MPX-3.3	LM1117-Series	SOT-223	LD1117S12TR, LM1117MPX-3.3/NOPB	2
DA5	MP2307	MP2307	SO-8_PWR	MP2307DN-LF-Z	1
DA7	AD7980	AD7980	MSOP-10	AD7980BRMZ	1
DA8	LP2985-2.5V	LM8805-X.X	SOT-23-5	LP2985AIM5-2.5/NOPB	1
DD1	PCA9515	PCA9515	SO-8	PCA9515AD	1
DD2	CH340G	CH340G	SO-16	CH340G	1
DD4, DD5	TXS0108	TXS0108	TSSOP-20	TXS0108EPWR	2
DD6	XC6SLX9	XC6SLX9	TQFP-144	XC6SLX9-2TQG144C	1
DD7	CY7C1041	CY7C1041	TSOP2-44	CY7C1041CV33-20ZSXE	1
DD8	AT45DB041E-SSHN-B	AT45DB041E-SSHN-B	SO-8	AT45DB041E-SSHN-B	1
HL1, HL2, HL3, HL4, HL5, HL6, HL7, HL8, HL9	TO-1608BC-BF	Text	LED_0603	TO-1608BC-BF	9
J1, J2, J3	SJMP1		SJMP1	SJMP1	3
L1	10uH	10uH	SPM5020	SPM5020T-100M-LR	1
R1, R3, R35	4.7k	4.7k	R0805	RC0805FR-074K7L	3
R2, R11, R12, R13, R14, R15, R16, R22, R29, R32, R33, R34	4.7k	4.7k	R0603	RC0603FR-074K7L	12
R4	27k	27k	R0805	RC0805FR-0727KL	1
R5, R6, R20	10k	10k	R0805	RC0805FR-0710KL	3
R7, R8, R9, R10, R23, R24, R25, R26, R27, R28, R30, R31	330	330	R0603	RC0603FR-07330RL	12
R17	100k	100k	R0805	RC0805FR-07100KL	1
R18	43k	43k	R0805	RC0805FR-0743KL	1
R19	1k	1k	R0805	RC0805FR-071KL	1
R21	6.8k	6.8k	R0805	RC0805JR-076K8L	1
R36	0	0	R0805	RC0805FR-070RL	1
XP1	IDC-06MS	IDC-06MS	IDC-06MS	IDC-06MS	1
XP2	DS1014-14M	DS1014-14M	BHS2-14	DS1014-14MF1BXT (BHS2-14)	1
XS1	1734035-2	1734035-2	Mini_USB_Hor	1734035-2	1
ZQ1	12 MHz	12 MHz	SMD_5032	ABM3-12.000MHZ-B2-T	1
ZQ2	80 MHz	80 MHz	KXO-V97T	KXO-V97	1

XP1



100 101 102 103 104 105 106 107 108 109 1010 1011 1012 1013 GND APREF SDH SCL

R5 R6 C11 C10

HW Rev. 2.0

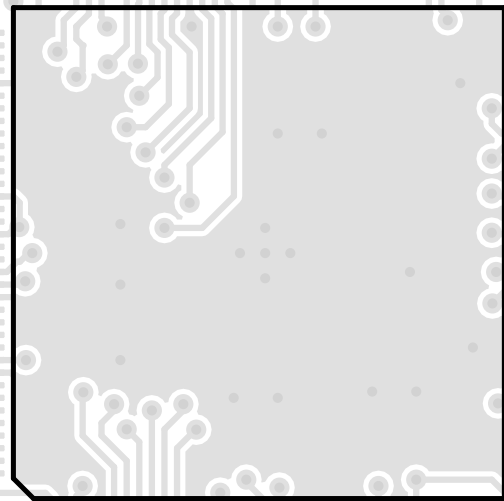
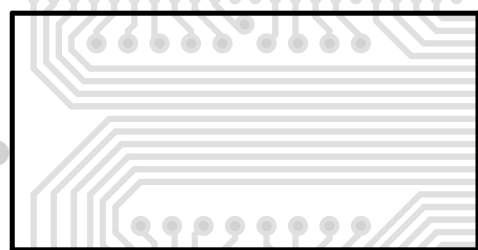
R11 C40 C39 ZQ2

DD1 R1

DD6

JTAG  
PINOUT  
TDI TCK  
TMS TDO  
GND 3.3V

DD7



DD8

0 1 2 3 4 5 6 7

C34 R17 R19 R18 R20

XP2 1

C50 DA5 C32 C33 C52 J1 L1 +5V

R7

13

1 0 M1 M0

DA3 C6 J3

REF RES 3v3 5v GND GND V1n A00 A01 A02 A03 A04 A05

DA7 to A00

DONE

